



**SEFTON HEALTH & SOCIAL CARE FORUM**

# Notes from the meeting

Meeting Date | January 2023

# Meeting Attendees

## Present were representatives from:

Sefton Advocacy

Parkhaven Trust

Formby Hub

Change Grown Live

Southport MacMillan Center

People First Merseyside

Community Connectors

Social Prescribers

Sefton Safeguarding

Partnership Board

Mersey Care Autism Services

## Contents:

- Looking ahead to 2023: Strength Weakness Opportunities and Threat
- New Structure for Sefton Place Team
- Safeguarding
- Members Update
- Information Exchange

# Looking ahead 2023

Health and Social Care Critical for 2023. Challenges in the system are affecting everyone professionally and personally.

Funding and Staffing are identified as key concerns across the sector.

The sudden availability of funding in the last quarter of the year is an annual challenge and concern.

Funding is always welcomed but short term funding doesn't help with long-term planning and ongoing problems. There was a consensus that timeliness on the part of commissioners could bring greater returns.

Staff recruitment and retention proving more difficult than ever, when retail and hospitality industries offer more than £10.50 an hour. There was a call for strength in action through VCFSE organisations. The voice of the sector needs to be listened to and respected. At a time when there is a lot of noise in the health and social care arena the VCFSE sector should not be taken for granted.

Without support organisations will falter



# Looking ahead 2023

Members want to be involved in the dialogue that shapes strategy development, not to be presented with strategies that have already been written. They want to be included in an ongoing dialogue. Strategies can not be left to fall by the wayside because officers are too busy, if the strategy is the guide to achieving change we should all be prioritizing the work of the strategy.

Commissioning needs to be robust. There should be a clear feedback mechanism keeping everyone informed of developments.

Currently there is no Adult Social Care Strategy. It is hoped that one will be developed that draws together the work on The Older Peoples Strategy, The Dementia Strategy, Carers Strategy and the End of life Strategy.

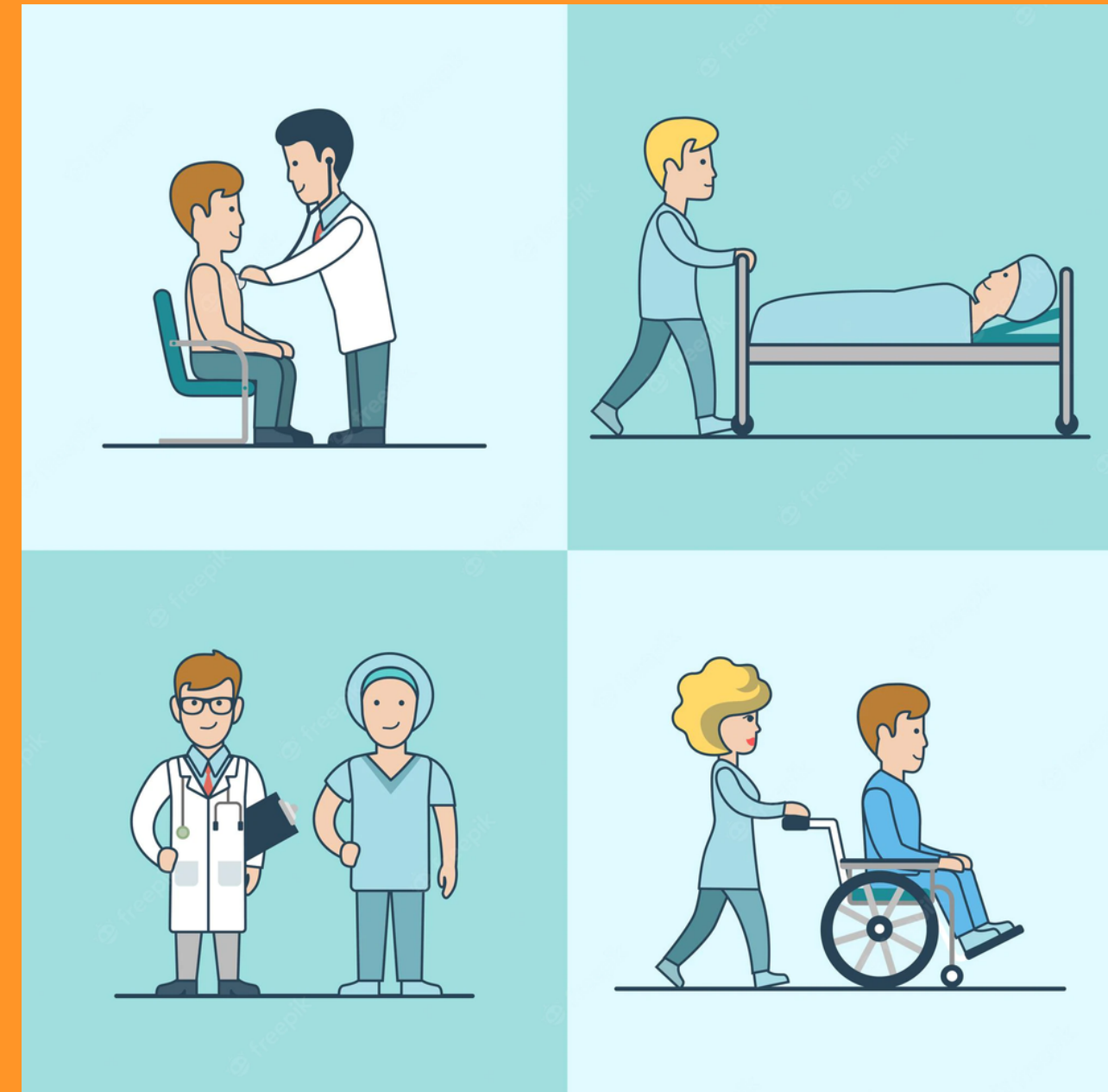
Chair of the HSCF, Andrew Booth, will be attending meeting to look at workforce challenges over the next couple of days.



# Hospital Discharge

There is concern that the systems response to the current discharged crisis is failing to take account of patients rights. Discharge to Assess, Care Hotels, and Hospital at Home proposals are raising significant concern for older citizens. There is also a concern that the support available through care agencies is difficult to secure as staffing issues remain challenging.

Sefton's Adult Safeguarding Partnership Board will look at proposals and monitor impacts. The next Board meeting will focus on this theme and they will report back to HSCF on the outcome of their dicussion.





# New Place Team in Sefton

Interviews are taking place this week for the senior post within the new teams that will be taking integrated care forward in Sefton . Ellie Moulton has been appointed as Assistant Director of Life Course Commissioning. The new system will be subject to the CQC inspection under the Health and Social Care Act. The Adult Social Care Framework for Practice, outlines the responsibilities for Local Authorities in the provision of adult social care. Ellie Moulton will be invited to attend the next HSCF to share more information about the new structures as they emerge. Additionally we will request the detasil of the new team to ensure that members are able to direct comments, concerns and complements directly to the new systems leadership team.





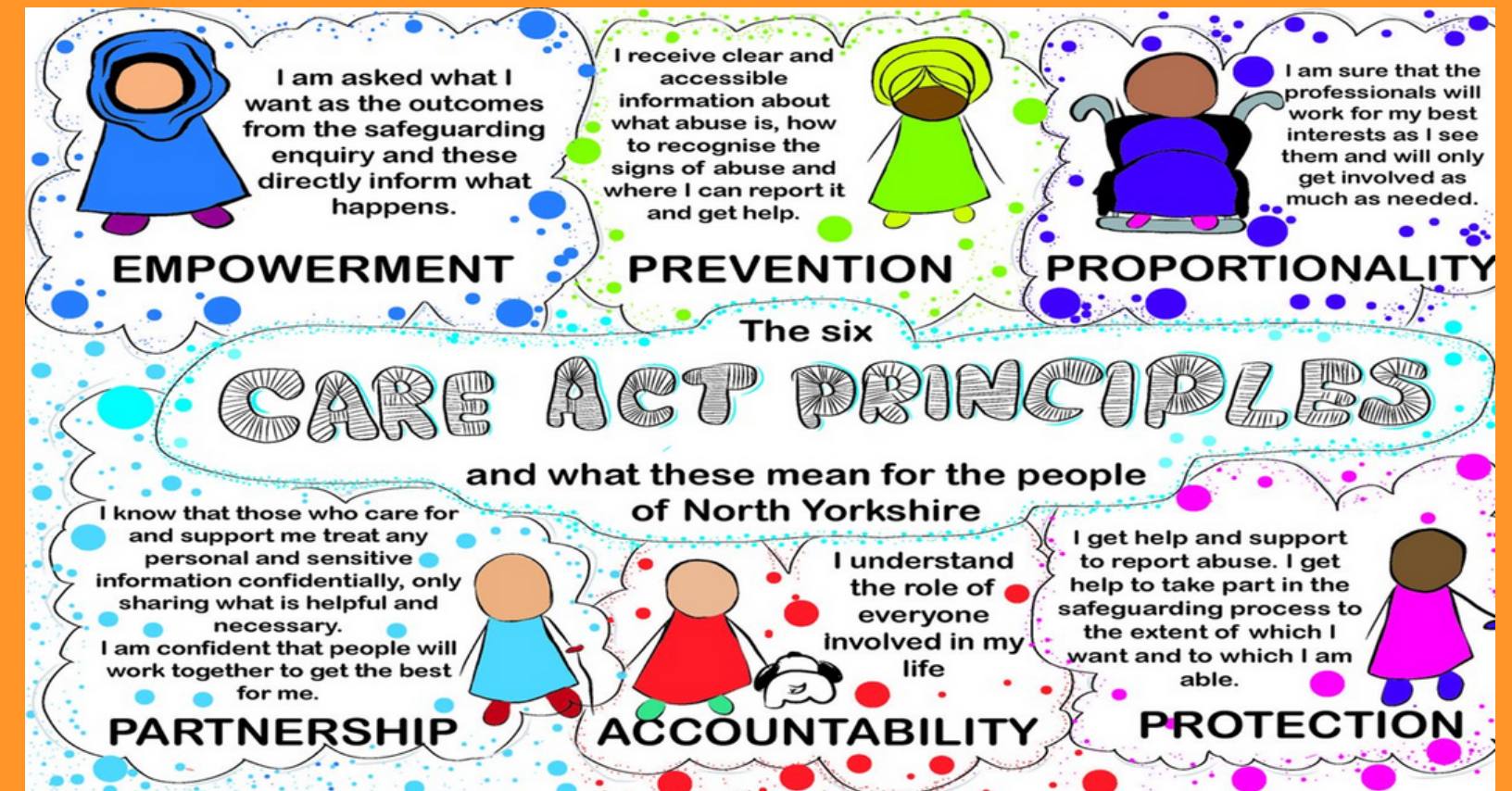
# Sefton Safeguarding Adults Partnership Board

CARE • PROTECT • RESPOND

## New Chair of the Adult Safeguarding Partnership Board

At the November HSCF Michelle Creed the new independent chair of the Sefton Safeguarding Adults Partnership Board gave an overview of the structure process and function of the new Board. VCFSE Board representative are Nigel Bellamy Sefton CVS and Diane Blair from Heathwatch. At the event member shared their insight and experience of the process of raising a safeguarding alert. The Board are keen to develop strong links with people who have had personal experience of safeguarding.

More information is available from the Partnership Board website



[Read More](#)





## **SAFEGUARDING PARTNERSHIP BOARD WEBSITE LAUNCH**

[MORE INFO](#)

‘Unless people’s lives are improved, then all the safeguarding work, systems, procedures and partnerships are purposeless’.

## **MARAM**

information was shared on the process for undertaking a Multi Agency Risk Assessment. The document describes the structure and process. An example of Good practice was shared on video link

[MORE INFO](#)

## **Contacts**

Joan Coupe and Hannah Neary from the Adult Safeguarding Board are always happy to hear from anyone who has a concern about the safeguarding

[MORE INFO](#)



# Members Updates



Plans are developing for a Death Cafe as part of the David Project. People First are working on a project to reduce anxiety about blood. Members of People First are to receive CPR training

[Read More](#)



Development of a Singing Groups at St Peters Church, 3rd Thursday in the month. Befriending Project is still delivering despite no current paid staff to support this work. Good working relationship with Social Prescriber

[Read More](#)



Awaiting planning permission to start on the next phase of development to replace building no longer fit for purpose. As a real living wage employer the increase in the living wage from April will present cost challenges in 2023.

[Contact](#)

# Members Updates



Justine Shenton has been appointed as the new manager. Planning for lots of activity in 2023. Three events already being planned: Wellbeing Spring event, World Larges Coffee Morning, Christmas Celebration.

[Read More](#)



Referrals into Community Connectors are on the increase. Social Prescribers increasingly working with Food Pantries. LWS resilience grant open till Feb

[Read More](#)



Meresycare Asperger's Service, new clinician appointed and two new support workers. Hoping to work through the backlog of cases awaiting diagnosis

[Read More](#)

# Information Exchange

## **CoREN**

Network event looking at the impact of cost of living crisis. For further details and to register your interest, please [click here](#):

**BSPHN 2023 Conference: Using Behavioural & Social Sciences to Create Healthy Futures : Richard Wilkinson key not speaker.** [Book your place here!](#)

## **Collective Encounters**

ARTS FOR SOCIAL CHANGE SHOWCASE

Thursday 23rd February, 7.30 - 9.30pm. [Book your place here.](#)

## **Dates for up and coming forums**

- **Dementia Friendly Sefton - Wednesday 25th January 2.00 pm till 3.30 pm**
- **Sefton In Mind Wednesday 15th February 12.30 pm till 2.00 pm**
- **Sefton Partnership for Older Citizens Wednesday 22nd February 2.00 pm till 3.30 pm**

## Dates for 2023

### Health and Social Care Forum Forum Meetings 2023

Click the dates below to book your place at the 2023 forums. For more information, get in touch.

[Wednesday 15th March 12.30pm till 2.00pm](#)

[Wednesday 17th May 12.30pm till 2.00pm](#)

[Wednesday 19th July 12.30pm till 2.00pm](#)

[Wednesday 20th September 12.30pm till 2.00pm](#)

[Wednesday 15th November 12.30pm till 2.00pm](#)



***Connect  
at our next  
HSCF***





# SEFTON HEALTH & SOCIAL CARE FORUM

If you would like to find out more information about the Health and Social Care Forum

please contact:

Jan Campbell

[jan.campbell@seftoncvss.org.uk](mailto:jan.campbell@seftoncvss.org.uk)

Our next SHSCF is on 15th March 2023.

To book your place, please [click here](#).

[Sefton CVS - Health & Social Care Forum](#)



**Sefton CVS**  
Supporting Local Communities