

Dementia
Friendly
Communities

Dementia Friendly Sefton Notes from November 2023

Meeting Date | 29th November
2023

Meeting Attendees

Present were representatives from:

Active Minds Day Centre
Adult Social Care
Alzheimer Society
Cambridge Court Care Home
Mersey Care
National Museum and Galleries
NHS ICB Sefton Place
Parkhaven Trust
Sefton Carers Centre
Sefton Council Commissioning
Sefton CVS
Southport Hospital
University of Liverpool

Contents:

- Dementia Strategy Update
- Care Home Capital Grant Report
- Research proposal to develop a new eye test using artificial intelligence to detect early dementia.
- House of Memories
- The Future of Dementia Friendly Sefton
- Information Exchange

Notes from the last meeting

Dementia Strategy update

Rob McDonald Transformation Manager for Cheshire and Merseyside ICB Sefton Place, gave an overview of the strategy development. To date a workshop has been held in Bootle Town Hall, further engagement activities are being planned. Alzheimer Society and Sefton Carers have supported with the voices of lived experience. A questionnaire is going out through the Cares Centre to understand more about the experience of living with people with Dementia .

Sefton Council are supporting a call for a target of 80% diagnosis rate for people in Sefton living with dementia. Barry Lyon from Alzheimer Society recommended reading the All Part Parliamentary Report on variation in diagnosis rates.

Raising the Barriers: An Action Plan to Tackle Regional Variation in Dementia Diagnosis in England

This is not an official publication of the House of Commons or the House of Lords. It has not been approved by either House or its committees. All-Party Parliamentary Groups are informal groups of Members of both Houses with a common interest in particular issues. The views expressed in this report are those of the group.

This report was researched and funded by Alzheimer's Society.

Current Dementia Diagnosis

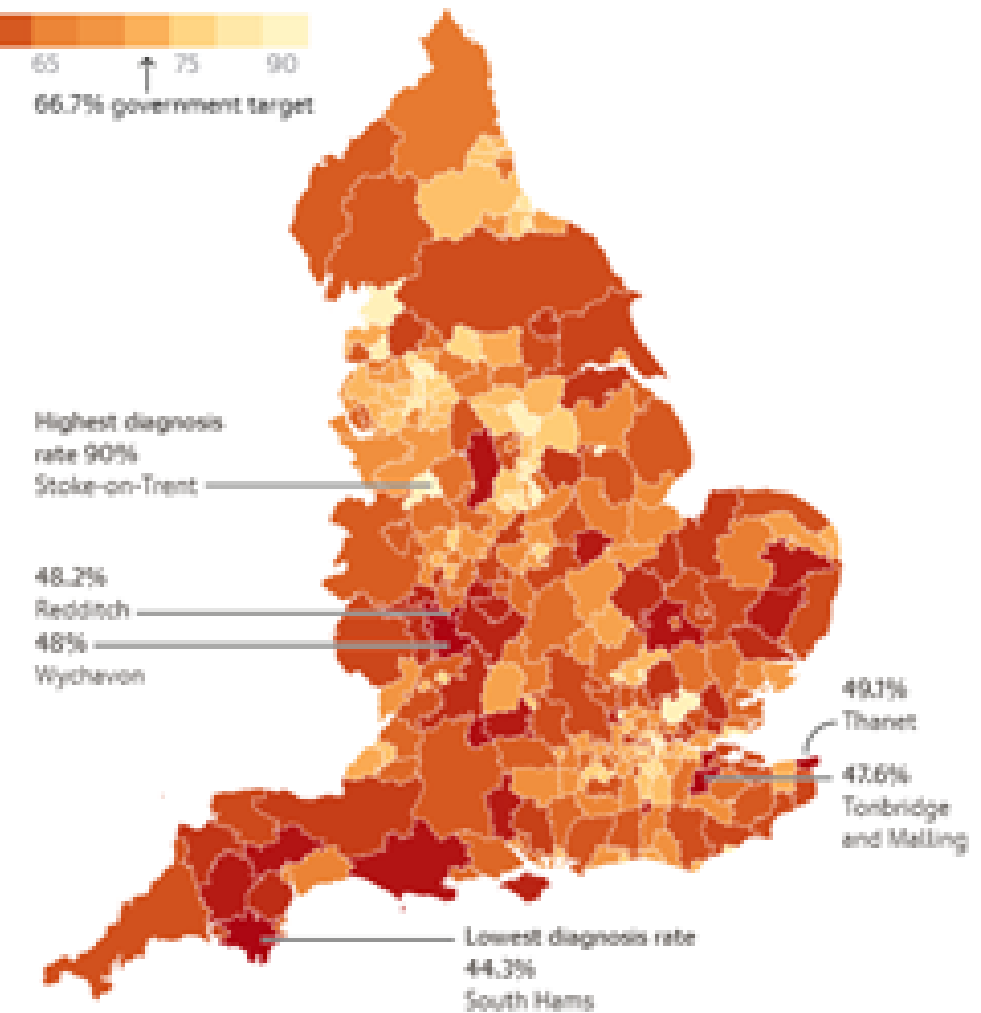
Dementia diagnosis rates vary across Sefton. Nationally the diagnostic target is 66.7%. Whilst Sefton is achieving this national target In Southport and Formby PCN area the diagnosis rate is 77.6% compared with a rate of 60.8% for South Sefton. Work is underway to address the difference in diagnosis rate. the new strategy will look to address these inequalities

Challenegs

There is concern that the quality of data across the country may not be as reliable in all areas . Work is advancing to standardize the quality of the data used nationally to give a true representation of the dignosis rate

More than half of all local authority districts in England are failing to meet the government's target dementia diagnosis rate of 66.7%

Percentage of patients with dementia who have a recorded diagnosis



Guardian graphic. Source: NHS England

Key Points

Developing clear pathways for the support of people post diagnosis is a critical part of the strategy. Communicating how to access support, where, when and how, will be central to the effectiveness of the strategy

The new strategy should be ready to share in Spring 2024. There will be further consultation throughout its development . The Action Plan will set out priorities for the borough

Use of the Diagnosing Advanced Dementia Mandate (DiADeM) assessment tool in care homes should help to improve diagnosis rates and care for those living with advanced dementia

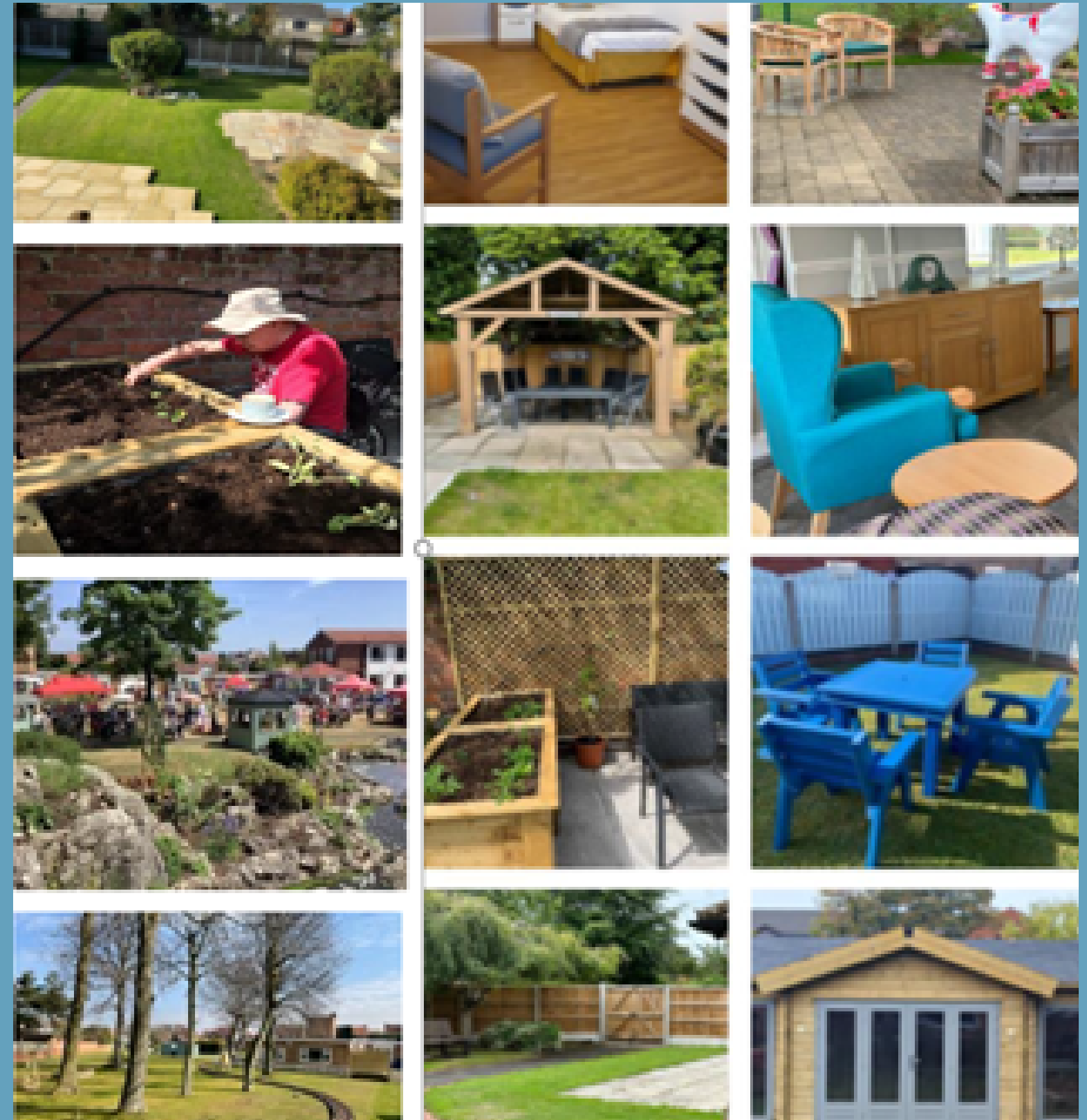
One of the key message of the strategy will be that you can live well with dementia. Getting a diagnosis opens up choices for planning your future both in respect of treatment and your personnel life

Developing a framework that link the different strategies E.g.Carers Strategy, Technology Strategy, End of Life Strategy etc.. will help to make a more coherent offer of support for people living with Dementia.

Capital Grants for Care Homes

What has it funded?

£1,160,000
Spend committed to
the Sefton Care
Home Improvement
Grants



Impact

Through
investing in
care homes
the lives of
people living
with
dementia
have been
improved

“During the Pandemic, the residents had been affected due to isolation and covid safety. Having an interactive table has provided alternative and additional means of keeping in touch with loved ones. Residents can take part in new activities together when using the interactive table and has improved mental health and increased communication and interaction with residents, staff, and visitors to the home”.

“By securing the perimeter all residents are now able to enjoy the outdoor space and the home is now able to consider more dementia referrals into the home”.

“All residents are really happy with the new patio and seating area, we were able to invite families along to our Jubilee Party and had full use of the seating area, still leaving plenty of room around the garden for residents to walk with purpose, or to sit and relax in an afternoon. Families have commented on how nice and relaxed the garden looks now.”

“The conservatory makes the residents feel safe and valued and has had a positive impact on their well-being. Visitors have been very impressed with the renovation and a celebratory event was held on 17th December 2022 as part of the grand opening”.

“The dementia friendly pathways have been installed outside and the area looks amazing, and, for those residents that are more mobile, they have been very impressed with the improvements”.

“The residents absolutely love the model railway, and we have strived to achieve a stimulus to reminisce and encourage older happier memories and basically have fun with their fellow residents and families.”

“The residents can now grow herbs and vegetables and pot flowers. For people with Dementia, time spent in gardens can help them relax and feel calm, they will generally become less agitated and distressed if they can have regular access to fresh air. The residents can now put box flower beds on the decking area now that is has been repaired and painted, and this is an ideal area where residents can meet and chat as its adjacent to the proposed “gardening club area.”

Making a difference

Our care home providers have successfully implemented a wide range of projects, which have improved their environment. Projects included the installation of sensory spaces both indoors and outdoors, summer house and conservatory refurbishments, cool touch radiators, dementia friendly furniture, interactive tables and Wi-Fi upgrades, TEC and digital equipment such as interactive tables, robotic toys / companion pets, dementia friendly lighting, carpets, decoration and installation of wet rooms and a hair salon for residents.

THERE IS LIKELY TO BE A FURTHER ROUND OF GRANTS IN 2024 . WE WILL LET YOU KNOW WHEN WE HEAR MORE

Capital Care Home Improvement Grants R2 Impact and Evaluation

Presentation written by:
Diane Clayton, Strategic Lead: Independent Living and TEC
November 2023

[**Read more**](#)

Innovation in Dementia Diagnosis

Uazman Alam is Senior Clinical Lecturer & Honorary Consultant Physician in Diabetes & Endocrinology in the Department of Cardiovascular & Metabolic Medicine, Institute of Life Course and Medical Sciences at Liverpool Centre for Cardiovascular Science at University of Liverpool and Liverpool University NHS Foundation Trust, presented an overview of a research proposal that he is working on to look at how AI might be used to identify early stages of dementia through the detailed analysis of the result of a simple eye test. He explained how the deterioration of the nerve pathways visible through Corneal Confocal Microscopy could be a predictor of more significant neurological damage. This early stage diagnostic tool could have significant implications for the future of dementia diagnosis and support.



House of Memories

Dawn Carroll from House of Memories shared details of the services and support available through House of Memories both at the Museum and on line. The museum has resources that can be borrowed including memory cases, these can be booked for a two week loan and include a wide variety of cultures and social activities. At the museum itself you can do a memory walk talking about the things you remember stimulated by the artifacts in the museum. For people unable to get to the museum itself there is a travelling theater experience through House of Memories on the road. Care Homes that are interested in this experience coming to their home please contact Dawn.



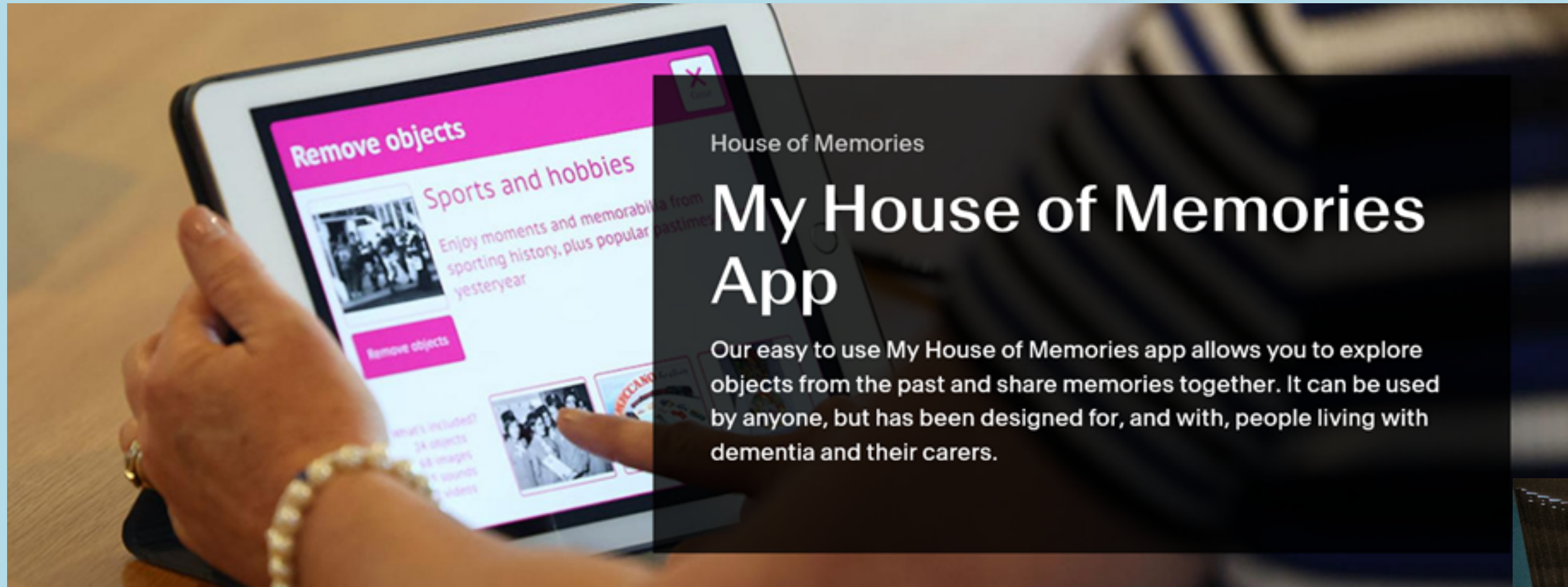
[Read more](#)

House of Memories 
National Museums Liverpool

10 YEARS

House of Memories National Museums Liverpool





The House of Memories App has lots of functions that can be used at home to engage people with dementia. You can build your own memory box of pictures places, objects and events. Care Homes can use the interactive tables bought through the capital grant scheme to enable residents to use the House of Memories App. Working together we can help people to live well with dementia. The App is available through ORCHA or simply by going on line and downloading and is free to use.



The Future of Dementia Friendly Sefton

Below are the 10 actions within the Liverpool City Region's Dementia Action Pledge. From December 2023 Dementia Friendly Sefton is no longer under the umbrella of the Alzheimer's Society and is free to determine the focus of the activities it chooses as priorities in 2024. It has been suggested that we consider the pledge set by the LCR Mayor Steve Rotheram, these will be discussed at our next meeting in February.

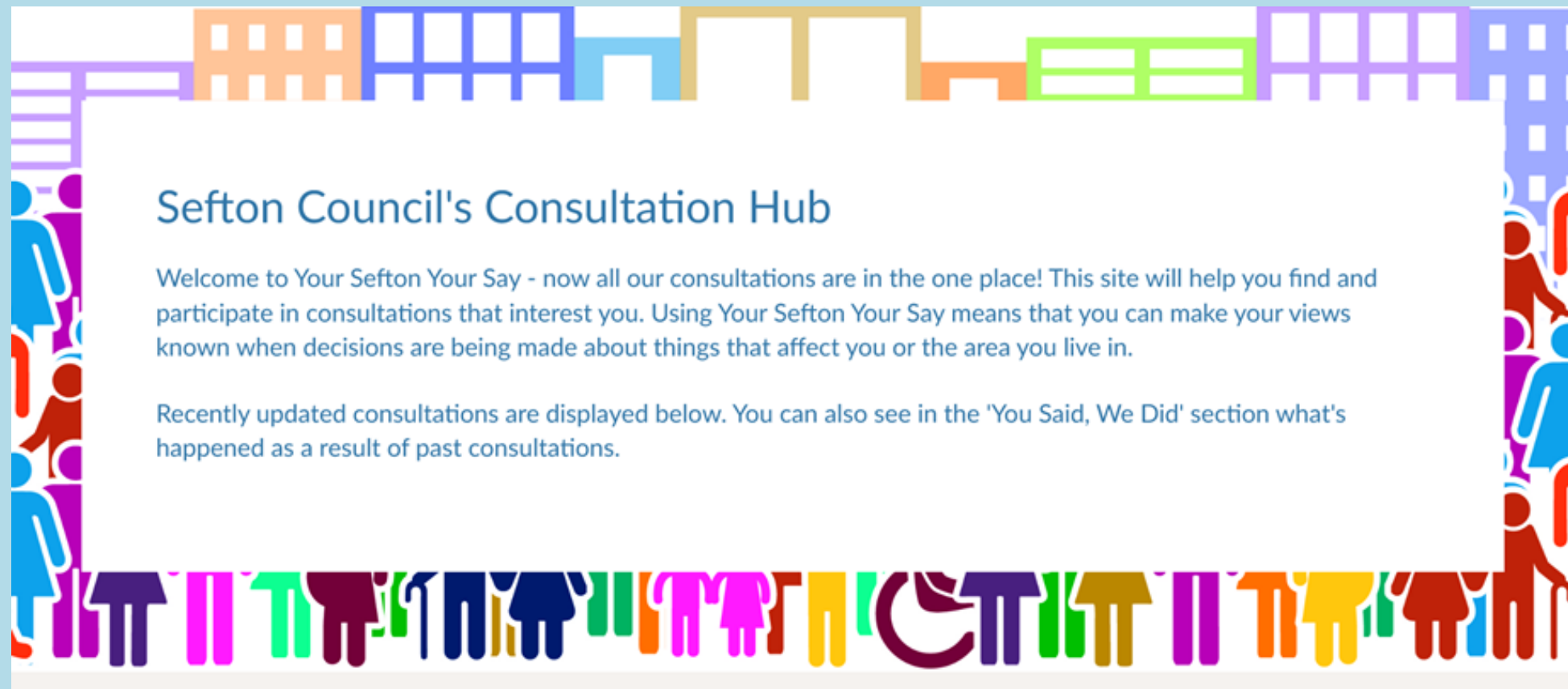
- 1. Dementia Champions within organisations**
- 2. Form a Dementia Action Alliance (DAA)**
- 3. Work with service user forums and advocacy groups to take action on issues identified by them**
- 4. Engage with voluntary, community, faith and business communities**
- 5. Promote Dementia Awareness**
- 6. Provide timely advice**
- 7. Train and develop a skilled workforce**
- 8. Share knowledge and understanding and best practice around current themes affecting people living with Dementia**
- 9. Early assessment and diagnosis**
- 10. Local integrated service**



**LIVERPOOL
CITY REGION**
COMBINED AUTHORITY

METROMAYOR
LIVERPOOL CITY REGION

Sefton Council All Age Carers Strategy Consultation



Sefton Council's Consultation Hub

Welcome to Your Sefton Your Say - now all our consultations are in the one place! This site will help you find and participate in consultations that interest you. Using Your Sefton Your Say means that you can make your views known when decisions are being made about things that affect you or the area you live in.

Recently updated consultations are displayed below. You can also see in the 'You Said, We Did' section what's happened as a result of past consultations.

From Thursday 23rd November 2023 to Sunday 18th February 2024, the Draft All Age Carers Strategy is out for consultation.

They would like to hear from people who look after a family member, friend or loved one to help to shape the final strategy



Do you look after someone who couldn't manage without your help? We'd like to hear from you!

Sefton Council is creating a new all-age Carers Strategy.

We want to hear from people who look after a family member, friend, or loved one and have your help to shape the final strategy.

Consultation is open from
23rd November 2023 - 18th February 2024

[Find out more](#)

0151 934 2888

sefton.gov.uk/carers





If you would like to find out more information about Dementia Friendly Sefton forum please contact Jan Campbell via email:
jan.campbell@seftoncv.org.uk

Our next forum is on February 2024.

To register your interest, please e-mail cormac.ocarroll@seftoncv.org.uk

[Sefton CVS - Dementia Friendly Sefton](#)