



SEFTON HEALTH & SOCIAL CARE FORUM

Notes from the meeting

Meeting Date | January 2024

Content

Feedback Form Forum Representatives:

New Realities

Dementia Friendly Sefton

Sefton In Mind

Carers Strategy

Cheshire & Merseyside State of the Sector Report

New Project: Peer Lead Working

Tracy Jeffes and Jan Leonard:

Sefton Place priorities for Primary Care in 2024

Anna Nygaard Head of Inequalities and Strategic

Partnerships Sefton Public Health:

Sefton part of the LCR Marmot Community

Meeting Attendees

Present were representatives from:

- Age Concern Liverpool and Sefton
- Aintree Training
- People First Merseyside
- CHART
- Living Well Sefton
- Social Prescribing
- Community Connector
- Brighter Living Partnership
- Safeguarding Adult Partnership Board
- Active Mind Space
- Alzheimer Society
- Sefton CVS
- Parkhaven Trust
- Sefton Council
- ICB Sefton Place
- Sustrans
- Combat Drugs Partnership
- Venus Centre
- MENCAP
- Samaritans
- Citizens Advice Sefton
- Galloways
- Public Health



Brew Monday

There's always
time for a cuppa
and a catch-up

#BrewMonday



A registered charity

We are supporting Brew Monday. Please check in with colleagues, have a brew and keep in touch.

SAMARITANS
SHUSH
listening tips

Top tips for becoming a better listener

Samaritans wants to encourage people to listen to the really important things their friends, family and colleagues need to tell them, and to devote some time and attention to being better listeners.

- S** Show you care
Focus on the other person, make eye contact, put away your phone.
- H** Have patience
It may take time and several attempts before a person is ready to open up.
- U** Use open questions
That need more than a yes/no answer, and follow up eg 'Tell me more'.
- S** Say it back
To check you've understood, but don't interrupt or offer a solution.
- H** Have courage
Don't be put off by a negative response and, most importantly, don't feel you have to fill a silence.

[samaritans.org/tips](https://www.samaritans.org/tips) A registered charity

Future Meetings



In Person

The Lake House

Cambridge Road

Waterloo

L22 1RR

**Third Wednesday every
other month**

10.00 am till 12.00 Noon

Partnership updates



New Realities

Kim Crowe is the HSCF representative on the New Realities Group.



Developing a can do culture across statutory and voluntary sector partners in Sefton. All Sefton Council staff now undertake New Realities Training. Read the booklet to find out more. Issues can be raised through the HSCF, if you are having any issues with health or the Local Authority let the HSCF Team know Kim is happy to take issues to the group on your behalf

New Realities has been a vehicle for developing collaborative approaches across Sefton. Angela White CEO of Sefton CVS, Chairs the New Realities Meetings. These meeting have been the driving force for the development of the Sefton Social Value Tool and the Community Insight Tool



Community Insight and Intelligence Tool
For VCF and Public Sector Organisations in Sefton

Scan the QR code to access the Community Insight and Intelligence Tool on mobile or tablet



SCAN ME

 **Sefton CVS** Sefton Partnership
Supporting Local Communities



Andrea Watts is the Sefton Council Lead on the group and has highlighted the that we are, as a borough, likely to face cuts to funding in the coming year with .

Tracy Jeffes spoke at the last New Realities Meeting about the opportunity to develop a Health and Social Care Academy that will help support people through pathways into a career in health and social care that will cut across traditional sector boundaries.

Social Value Tool

Dementia Friendly Sefton

Next meeting:
14th February 2024
2.30 pm till 4.30 pm
Crosby Library

Kim Crowe is the Chair of Dementia Sefton
At the last meeting issues covered included:

- Dementia Strategy Update
- Technology enable care and the Care Home Capital Grant Report
- Research proposal to develop a new eye test using artificial intelligence to detect early dementia.
- House of Memories
- The Future of Dementia Friendly Sefton and the LCR Dementia Pledge





Next meeting:
20th February 2024
10.00am till 12.00am
The Lake House Waterloo

Focus on:
System P -Complex Lives

At the last meeting issues covered included:

- **Mental Health Community Transformation Funding**
- **We're Here Campaign**
- **Sefton In Mind Priorities for 2024**
- **CHART Housing Support and Mental Health**
- **The Voice of Lived Experience - Mersey Care**
- **Mental Health Research and Innovation Centre**



CARERS TRUST

Sefton Carers
Centre

Vicky Keeley CEO of the Sefton Carers Center is encouraging everyone with caring responsibilities to complete the survey to help shape the future support for carers in Sefton.

**YOUR SEFTON
YOUR SAY**

Age Age Carers Strategy Consultation

The consultation starts on Thursday 23rd November 2023 and ends on Sunday 18th February 2024.

[Click here to take the survey.](#)





State of the Sector Report

Sefton

Context

Sefton has a population of approximately 279,682 people, and life expectancy for both men and women is in the region of 1 year less than the England average. Further, there are significant inequalities between local communities: between the most and least deprived areas there is a variance in life expectancy for women of 12 years, and 14 years for men.

Size and scope of the VCFSE sector in Sefton

Number of registered charities	479	24%
Community Interest Companies (CICs)	135	7%
Companies Limited by Guarantee (CLGs)	327	16%
Registered Societies	18	1%
Community Sports Clubs	26	1%
Below the radar groups (BRG)	1,024	51%
Total	2,009	

Size of workforce

Number of paid staff	3,950
Number of volunteers (once a month minimum)	39,506
Number of regular volunteers	14,267
Volunteer hours per week	52,705

Value of workforce

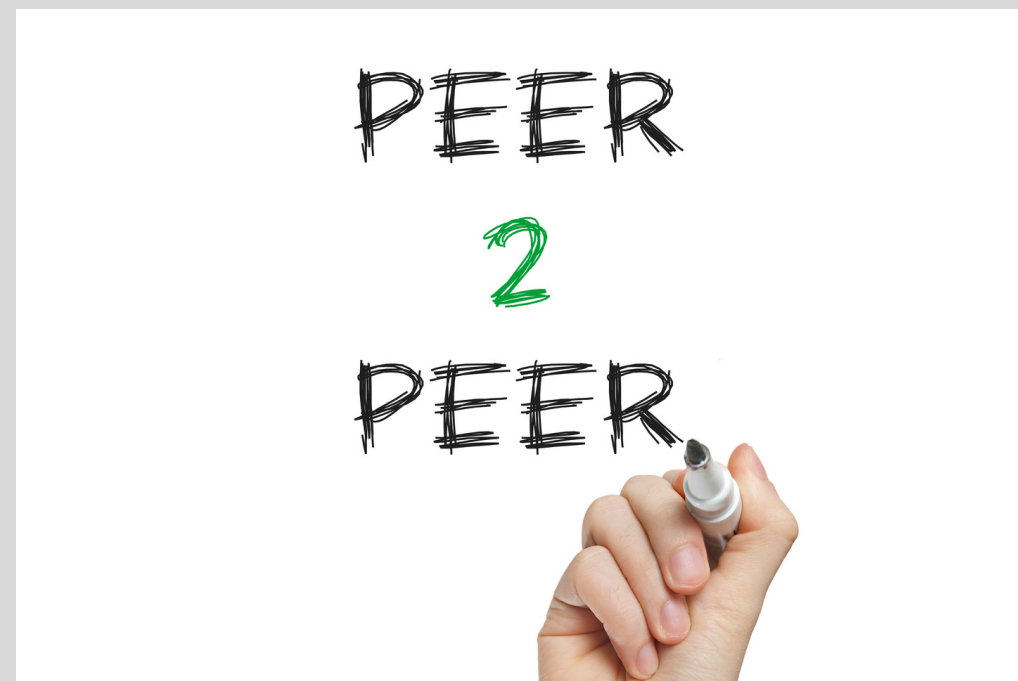
Value of paid staff	£94.3 million per year
Value of volunteering	£79.8 million per year
Total	£124.2 million per year

Economic contribution of the VCFSE sector in Sefton

£70.8 million GVA per year




New Project Peer Support



PEER LEAD SUPPORT : A CALL TO ALL MEMBERS

Simon and Lesley from People First Merseyside will lead on a new project for the HSCF. We are inviting individuals who are members of Peer Lead organisations to join us to look at developing guidance for Peer Lead Organisations.

People First Merseyside are an excellent example of a peer lead organisation. We are looking at ways in which we can support those organisation that champion the voice of lived experience including older peoples groups, mental health groups and those for people with learning difficulties or condition specific groups

GET IN TOUCH

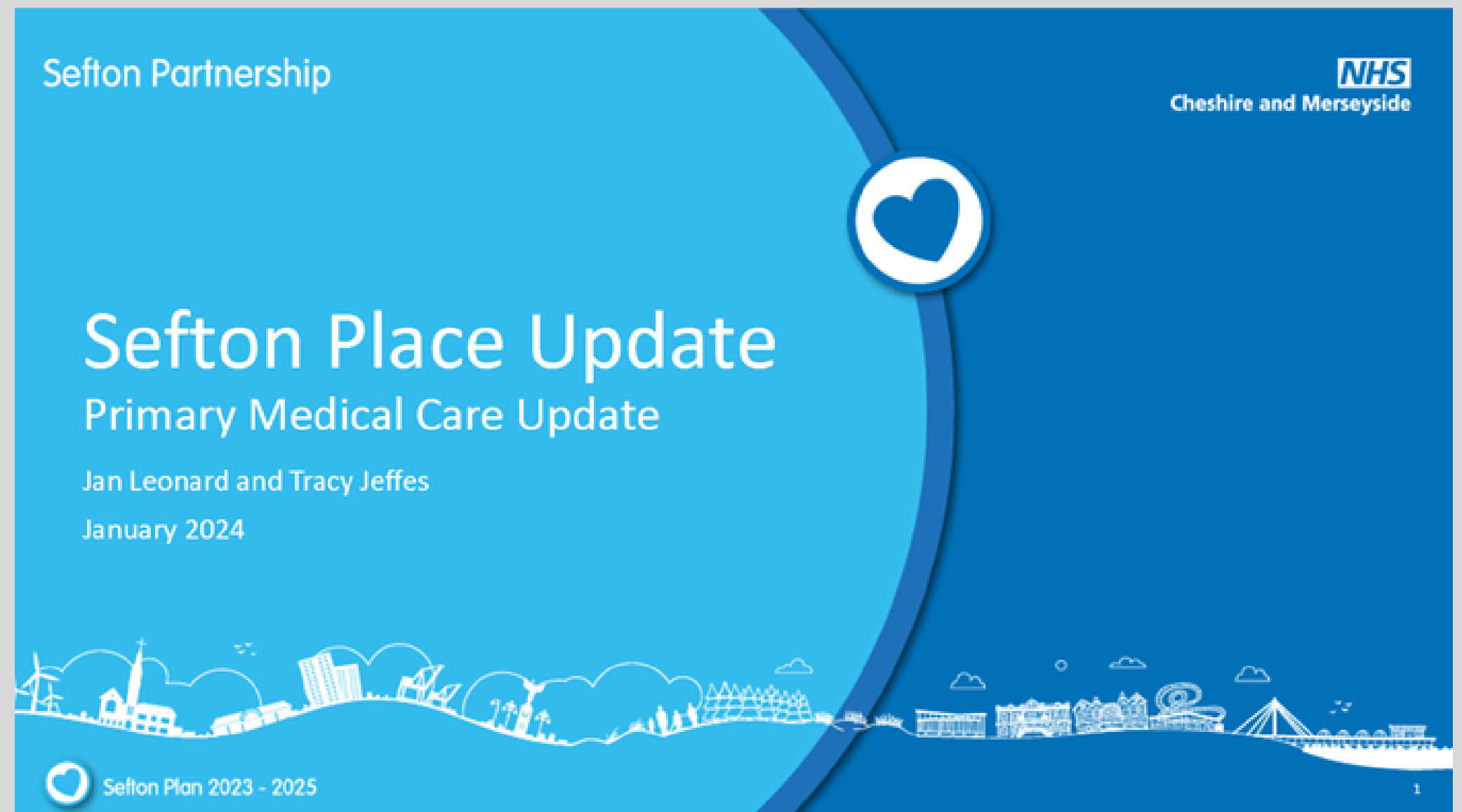
If you would like to be involved or to find out more contact jan.campbell@seftoncvvs.org.uk



Primary Care Priorities

**Tracy Jeffes and
Jan Leonard
provided an update
on the priorities
for primary care in
Sefton Place**

[Read More](#)

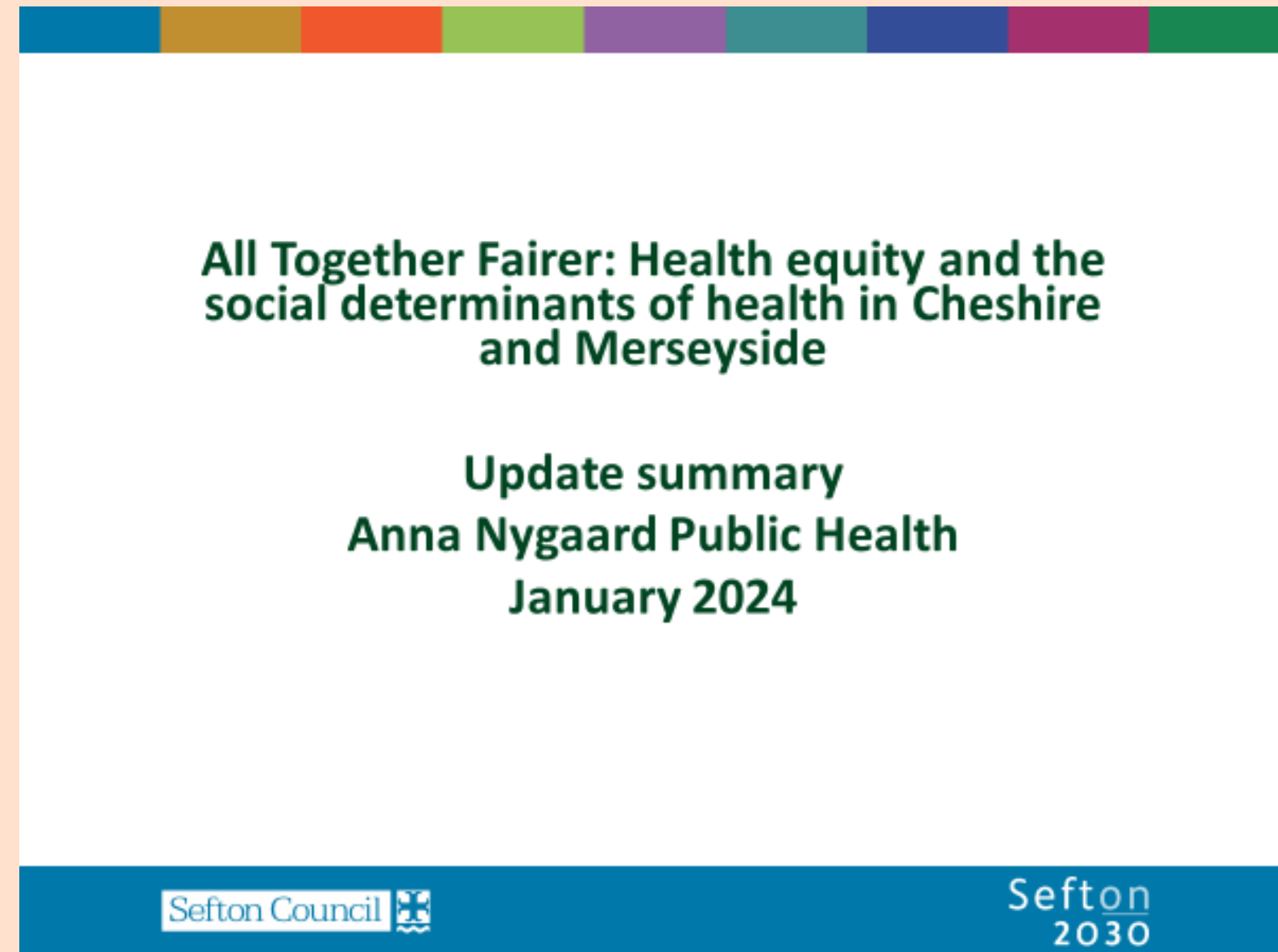


Sefton a Marmot Community

Anna Nygaard Head of Inequalities and Strategic Partnerships Sefton Public Health: Part of the LCR Marmot Community.

The report looked at the stark inequalities and social determinants present in Cheshire & Merseyside and how, using the Marmot Principles we can improve the picture.

[Read More](#)





SEFTON HEALTH & SOCIAL CARE FORUM

If you would like to find out more information about the Health and Social Care Forum please contact:

Jan Campbell

jan.campbell@seftoncvvs.org.uk

Our next HSCF is on **20th March 2024**

To book your place, please [click here](#)

<https://seftoncvvs.org.uk/networks-and-forums/health-and-social-care->



Sefton CVS
Supporting Local Communities