



**SEFTON HEALTH & SOCIAL CARE FORUM**

# Notes from the meeting

Meeting Date | July 2023

# Meeting Attendees

Present were representatives from:

- Age Concern Liverpool and Sefton
- Healthwatch Sefton
- Parkhaven Trust
- Change Grow Live
- Venus Centre
- Kindfulness Coffee Club
- We Are With You
- People First Merseyside
- Autism Spectrum Condition Service
- Living Well Sefton
- Social Prescribing
- Community Connector
- Heat Failure Mersey Care
- Long Covid Service Mersey Care
- Citizens Advice Sefton
- Merseyside Fire and Rescue
- Samaritan
- Sefton Advocacy
- Sefton CVS
- Sefton Opera
- St Jsophs Hopsice



## Contents:

- **Employment of people with Mental Illness and Learning Difficulties in Sefton**
- **Feedback from the May HSCF**
- **Plans for future HSCF meetings**
- **Evidence and Insight Tool**
- **Information Exchange**

## Employment opportunities for people with Mental Ill Health and or Learning Disabilities

A working group has been set up in Sefton to look at opportunities for more people with Learning Disabilities and Mental Illness to be supported in employment or volunteering. The HSCF has been asked to identify what we are doing across the sector to support people into employment and volunteering



Employment for people with mental ill health and or learning disabilities in Sefton, who are receiving support through Sefton Social Services, is lower than many other areas. Joshua Cross, Business Intelligence Analyst from Sefton Council shared some headline figures.

Learning Disabilities or Mental Illness In Employment  
**2.2%**  
Nationally  
**4.8%**

Learning Disabilities or Mental Illness In Volunteering  
**4.3%**  
Nationally  
**8.2%**

**[Click here](#) to tell us what you are doing to support employment and volunteering opportunities for people with Learning Disabilities or Mental Illness**

**Does your organisation currently provide employment opportunities for people living with Mental Ill Health and or Learning Disabilities?**

**Does your organisation currently provide volunteering opportunities for people living with Mental Ill Health and or Learning Disabilities?**

**Would your organisation be interested in developing employment or volunteering opportunities for people living with Mental Ill Health and or Learning Disabilities?**

# Your Questions and Answers

Have numbers changed since Covid?  
No this population has remained fairly stable pre and post covid

Was self employment an option?  
Yes, self employed was included as an option

Are the next steps to look at barriers and opportunities?  
Yes, Nick Roberts is putting together a list of the current opportunities

Are there other list of people with Learning Difficulties and Mental illness?  
Yes, but not in a format that we can use to bring together with the adult social care data

Does a list of people with learning difficulties and mental illness exist in primary care?  
Yes, but it doesn't link to employment of volunteering Josh is waiting to hear from DWP who may have this information

**Current  
Volunteering and  
Employment  
Opportunities for  
People with  
Mental Illness and  
or Learning  
Disabilities**

**Change Grow Live**

Change Grow Live run a supported volunteer program  
They recruit twice a year and provide 6 months worth  
of training and a support program

[MORE  
INFO](#)

**Kindfulness Coffee**

Kindfulness Coffee have opportunities for people with  
learning difficulties to volunteer at their cafe and shop

[MORE  
INFO](#)

# May Forum -Sefton Place Plan and CQC Self Assessment Preperation

You said that Community Resilience sounds as if the VCFSE Sector can manage on very little in terms of resource.

They changed their focus to put "Community First "

You asked to know more about the Sefton Insight Tool - Rachel Jones's presentation follows shortly

You asked for an organogram of "Who's who" at Sefton Place

They can't share an organogram just yet, but here is a list of the names and titles of some of the key figures in the new system.

- Deborah Butcher – Sefton Place Director
- Rebecca McCullough – Associate Director of Finance
- Kerrie France – Associate Director, Quality and Safety Improvement
- Stephen Williams – Associate Director Transformation and Partnerships
- Jan Leonard – Associate Director Primary Care and Integration
- Tracy Jeffes - Associate Director Primary Care and Integration
- Debbie Fagan – Director of Urgent Care and Patient Flow
- Debbie Fairclough – Interim programme lead corporate services

# HSCF Forum Priorities for 2023 -2024

**Regular progress report from the Sefton Place Team to keep members updated. There needs to be an ongoing dialogue with HSCF members as the organisations that provide insight into emerging need and provide care and support**

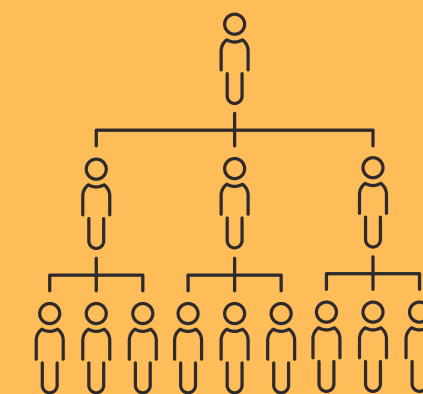


**NHS 75**

**Cheshire and Merseyside**

**Representation in the structure: Re-establish the system of HSCF representatives engaging in the policy, planing and delivery mechanisms of Sefton Place**

**Sharing insight and intelligence through new CVS tool**





# HSCF Forum Priorities for 2023 -2024

**Safeguarding - Invite Sefton's Adult Safeguarding Partnership Board to share updates on topics important to Sefton. Have representatives from Domestic Abuse Partnership share information at HSCF**



**Sefton Safeguarding Adults Partnership Board**

**CARE • PROTECT • RESPOND**



**Keep a mixture of topics its good to hear things you don't hear elsewhere**

**In-person meets a couple of times a year. Networking, informal conversations are important**



# HSCF Forum Priorities for 2023 -2024

**Schedule a regular updates on the structures that make up the VCFSE system in Sefton and beyond. Eg:**

**VS6**

**Liverpool City Region (LCR)  
Cheshire and Merseyside ICB**

**VS6 – Working together to build a stronger Liverpool City Region**



**Identify gaps in the system and take a can do attitude to workout a way to work across sectors to support Sefton as a Place**

**Ask funders to talk with members. Support the members with funding challenges.**



# Rachel Jones Head of Performance and Operations at Sefton CVS updated on the development of the Sefton Partnership, Community Insight Tool

Rachel explained that this tool is not for capturing individual experiences. It is a way of gaining insight into trends. Information gathered using the tool will be shared with Sefton's Population Management Sub Group. You can do a search of themes. You can submit insight information at any time. You will be asked for postcodes so we can see where issues are arising. You will also be asked if you have any suggestions on how we can respond to the problems.



# Sefton Partnership Insight Tool

 **Sefton CVS** Sefton Partnership  
Supporting Local Communities

## Community Insight Tool

 ONE MINUTE BRIEFING 

- 1 What is a community insight and intelligence gathering tool?**

The tool is an online form which allows staff and volunteers working directly with residents to share information about the issues, experiences and situations that are impacting on local communities throughout Sefton.
- 2 Why do we need this tool?**

Partners in Sefton have a long history and track record of engaging with local people and communities to gain insights and experiences. However, it was identified that there was no central place to collate this data allowing it to be of benefit to all partners in Sefton. It is in the ethos of integrating that we bring together our shared skills and access to pockets of the population from our different sectors and organisations. By triangulating what data is available we will begin to develop a holistic story of what it really is like to live in Sefton. The information gathered will help to identify opportunities to work collaboratively across sectors in order to improve outcomes for local people.
- 3 What type of information will the tool gather?**

There are no exclusions to the topics of information to be received, insights will relate to the issues as perceived by the agencies reporting, likely to include (but not limited to): housing, transport, digital exclusion, financial inclusion, community safety, environmental, health, social care, wellbeing, equality, access to services. We want agencies to share as much useful detail as possible, but it is important that information is recorded in an anonymous way. We request that contributors do not share any personal or identifiable details. If non-anonymised information is shared, it will be deleted and the person who provided the information contacted and asked to re-submit anonymously.
- 4 What happens to information when it is submitted?**

Information is stored securely on Sefton CVS's Customer Relationship Management System in line with their Data Policy. The Sefton Partnership will have access to the data, which will be stored, collated and analysed over time. The information will help to advance Sefton's approach to Population Health Management by triangulating this qualitative, real-life information with quantitative data sets. Additionally, over time, the data collected via the tool could inform how we commission services going forward.

The information will be translated into reports, which may be shared publicly, via usual communication channels and through Sefton's networks and partnerships.
- 5 How often should information be submitted?**

That depends entirely on the user. Some agencies may want to submit intelligence on a weekly basis, others more sporadically. We anticipate each organisation using the tool will determine a level of frequency which is reflective of the levels of insight and intelligence they gain and suitable for their organisation.
- 6 Where can the tool be accessed?**

The tool can be accessed via the following link: [insights.seftoncvcs.org.uk](https://insights.seftoncvcs.org.uk)

It's a simple web form which can be accessed from a mobile, smart device or laptop and can be completed in less than a minute.


A demo video of the tool can be found [here on Youtube](#).




- 7 Want to know more?**

Email us at [rachel.jones@seftoncvcs.org.uk](mailto:rachel.jones@seftoncvcs.org.uk) or [nery.mcgill@sefton.gov.uk](mailto:nery.mcgill@sefton.gov.uk)

Please contact Rachel with any feedback on the tool. We will share updates at the HSCF

Scan the QR code to  access the Community Insight and Intelligence Tool on mobile or tablet



[Click to watch the video guide on how to use the tool](#)

# Information Exchange

## NEW REALITIES

Kim Crowe is the HSCF representative on the New Realities Board. New Realities is a 'can do' collaboration agreement that is supported by Sefton Council, Sefton CVS, and other local voluntary, community and faith organisation. Kim will give regular updates at the HSCF and is happy to take issues up through the New Realities Board if there are and challenges facing the sector in respect of Health and Social Care. Follow the link to find out more

[Click here for more](#)

## HEALTHWATCH SEFTON

Provide a lot of information on Health Services. Currently Health watch are looking at GP access focusing on the challenges of getting a GP appointment. Barbara Nettleton, new Chair of Healthwatch Sefton, reminded the members that GPs are not the only source of support or information accessible through primary care.

[Click here for more](#)

## CHANGE GROW LIVE

CGL have a Community Educator who works to educate partners in the nature of substance issues Any organisations who feel it would be beneficial for their staff to be trained in substance awareness please contact Mindy directly, details below



# Information Exchange

## DAVID PROJECT:

People First Merseyside's David Project is working with Liverpool University, Trainee Nurses to train them to fill in the Learning Difficulties Health Passport

[Click here for more](#)

## LIVING WELL SEFTON

There is a program of Making Every Contact Count training about to be delivered through Living Well Sefton. Dates for MECC and MECC for Mental Health health are available on the Living Well Sefton Website .

[Click here for more](#)

## VENUS

Venus are taking seventy Sefton residnet to Edale Youth Hostle next week and are looking for our support. We wish them well and hope for good weather.

## SEFTON ADVOCACY

Up date on the commissioning of Advocacy Services. Sefon have agreed to fund Heathwatch, People First and Sefton Advocacy for the remainder of the financial year and during that time they will look to commission and Advocacy Hub .





# SEFTON HEALTH & SOCIAL CARE FORUM

If you would like to find out more information about the Health and Social Care Forum

please contact:

Jan Campbell

[jan.campbell@seftoncvvs.org.uk](mailto:jan.campbell@seftoncvvs.org.uk)

Our next HSCF is on **20th September 2023**.

To book your place, please [click here](#)

<https://seftoncvvs.org.uk/networks-and-forums/health-and-social-care->



**Sefton CVS**  
Supporting Local Communities