



**SEFTON HEALTH & SOCIAL CARE FORUM**

# Notes from the meeting

Meeting Date | September 2023

# Meeting Attendees

Present were representatives from:

- Venus Centre
- Living Well Sefton
- Citizens Advice Sefton
- Merseyside Fire and Rescue
- SWAN Women Centre
- St Josephs Hopsice
- Sefton Carers Centre
- Galloways
- Sefton Council
- Sefton Advocacy
- Sefton CVS



## Contents:

- **Feedback form last meeting**
- **Co-Production Good Practice**
- **Fire Service Prevention Offer**
- **Cultural Strategy**
- **VS6 Leadership**
- **Health and Wellbeing Board Update**
- **Care Quality Commission Assessment**
- **Cancer Alliance Social Action**

# Feedback from the last meeting

Does your organisation provide employment or volunteering opportunities for people with mental health issues or learning disabilities? Please share your details with [jan.Campbell@seftoncvs.org.uk](mailto:jan.Campbell@seftoncvs.org.uk)



## You asked for... We have

**Regular progress reports from the ICB and Sefton Place Team:** We will have someone at every meeting from November

**Updates for the Safeguarding Board and Domestic Abuse Partnership:** The November HSCF will Focus on Safeguarding  
**In-person meets a couple of times a year:** The November and May Meetings will be In Person

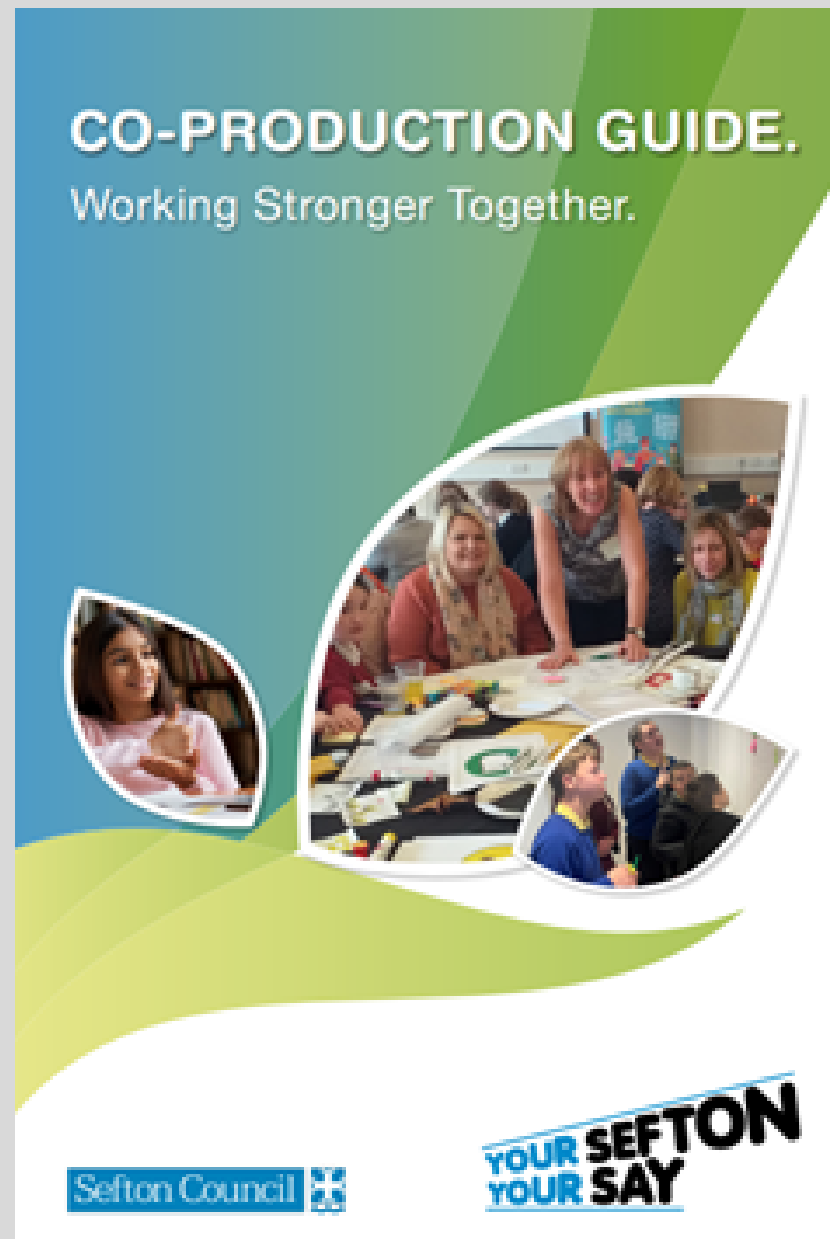
**Knowing who is who in the wider VCFSE system:** See VS6 Leadership on page 12

**Ways to share your insight :**

Scan the QR code to >>>>>  
access the Community  
Insight and Intelligence  
Tool on mobile or tablet



# Co-production



**Jayne Vincent and Michelle Angelsea spoke about the New Co-production Consultation and Engagement Framework that sets out standards for all engagement activities.**

**Working with People First Merseyside and the Improving Information Group a guide for staff on how to work in a way that supports co-production has been developed copies are available on the council website**

# I Statements

Eight 'I' statements are used to monitor engagement and co-production. These statements are the commitments made by the council to ensure that people are involved in decision making, that will impact on them and those they care for. Evidence of the impact of Co-production is gathered and the guide includes an evaluation tool

## Our Co-production Commitment – 'I' statements.



# Short Term Assessment Unit

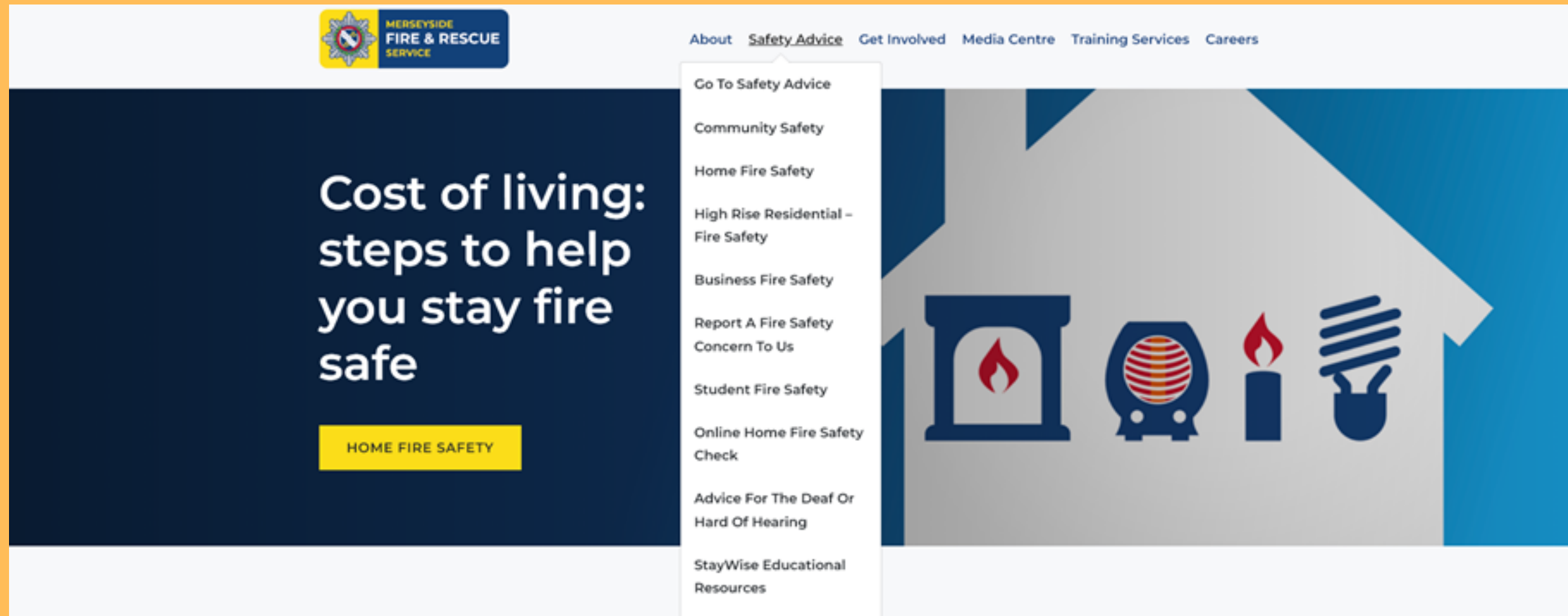


The development of the short term assessment unit at Sandbrooks has progressed using co-production methods. Evidence of process is available on Sefton Councils website. The discussions are currently looking at the care provider contract

The STAU is only one part of a bigger development in Ainsdale which will include additional support housing . If you would like to be included in the conversation please contact Jayne and Michelle

If you have examples of co-production you would like to share Jayne and Michelle would be pleased to hear from you. We need to celebrate the good work that takes place in sefton

# Merseyside Fire and Rescue



Sarah from Merseyside Fire and Rescue offered the opportunity for training in Home Fire Safety. Many of the fatal fires on Merseyside have involved individual who have been known to other agencies.

# Fire risks to look out for

Smoking, particularly smoking in bed.  
Cooking chip pans. Scorch marks on pans  
Electrics, overloaded plugs and block  
adapter

Candles and Tealights left unattended  
Heating particularly portable heaters, they  
can fall over easily

Emollient creams are a burn hazard





**Merseyside Fire Service Offer Safe and Well visits to refer a client  
visit: <https://www.merseyfire.gov.uk/>**

**Fire and Rescue:can offer  
Smoke Alarms to all Sefton Homes  
Heat Alarms  
Hard of Hearing Alarms  
Issue Fire Service Equipment  
Air Fryer  
Fire retardant bedding  
Fire retardant clothing  
Metal Bins  
Oil filled radiators**

**For more information and opportunities for your staff receive an  
awareness session on Fire Service support contact:  
[sarahbell-cassidy@merseyfire.gov.uk](mailto:sarahbell-cassidy@merseyfire.gov.uk)**



**MERSEYSIDE  
FIRE & RESCUE  
SERVICE**

# A Cultural Statargy for Sefton at 50

Sefton Council and partners are developing a cultural strategy for the Borough.

David Eddy Localities Team Manager talked about the development of a better understanding of culture in Sefton.

At the heart of the strategy is a desire to raise the profile of Sefton

David would be interested in the ways we can work together to strengthen the relationship between health and cultural activities.

At The Library Programmer is a good example of an initiative that has brought health benefits. Could more art and cultural activities be social prescriptions for better health outcomes?

David.Eddy@sefton.gov.uk

Culture is about more than

buildings, its about:

Connecting People

Tackling Health Inequalities

Building Confidence

Use green and Blue to

improve health

Champions the creative

sector

Set up a framework for

collaboration

engaging young people

For more information

contact:

2025 Borough of Culture

**David.Eddy@sefton.gov.uk**

# Community Heritage Grants

Thanks to the National Lottery Heritage Fund, Sefton CVS is inviting applications for up to £2,000 from groups across Sefton to run heritage projects and activities between October 2023 and March 2024.

**THE APPLICATION DEADLINE IS MIDDAY,  
FRIDAY 6 OCTOBER 2023.**

For more information contact:  
**[Ronnie.Murphy@seftoncvvs.org.uk](mailto:Ronnie.Murphy@seftoncvvs.org.uk)**



# VS6 – Working together to build a stronger Liverpool City Region



“Together we're developing a new culture of partnership and collaboration across the city region, ensuring a future that has communities at the heart of our city region.”

Ellen Loudon  
Independent VS6 Chair

## Whose's who in VS6

Ellen Loudon is Chair of VS6 and Advisors to LCR Mayor, as well as being Vice Chair of Cheshire and Merseyside Health Care Partnership

Warren Escadale is Cheshire and Merseyside Integrated Care Board Representative  
Angela White is Sefton representative on VS6. Together they articulate the voice of the sector to inform strategic developments across the LCR and wider

Find out more for about the work of VS6 by visiting the website

<https://www.vs6partnership.org.uk/>

Ellen Loudon TOGETHER LIVERPOOL, CHAIR OF VS6	Sally Yeoman HALTON AND ST HELENS VOLUNTARY AND COMMUNITY ACTION	Warren Escadale VSNW	Angela White SEFTON CVS	Gareth Prytherch WIRRAL CVS
Clare White LIVERPOOL CVS	Racheal Jones ONE KNOWSLEY	Gill Bainbridge MERSEYSIDE YOUTH ASSOCIATION	Stuart McGrory VOLA	Rae Brooke COMMUNITY FOUNDATIONS FOR LANCASHIRE & MERSEYSIDE

# Health and Wellbeing Board Update

**Since pre-pandemic contacts with GP's in Sefton have increased between 20-40%**

**Numbers of appointments available have increased by 12%**

**Satisfaction rates for GP's are in line with the national average (71%) but satisfaction rates for access to GPs are down to 40%**

**An improvement plan is in place to address the 8.00am rush for appointments and to improve telephone equipment to improve first contact**



# Adults Forum

**Andrew Booth has been appointed Chair of the Adult Forum**

**This group will have oversight of the strategies currently being developed in Sefton**

**Cares Strategy**

**Dementia Strategy**

**Aging Well Strategy**

**End of Life Strategy**



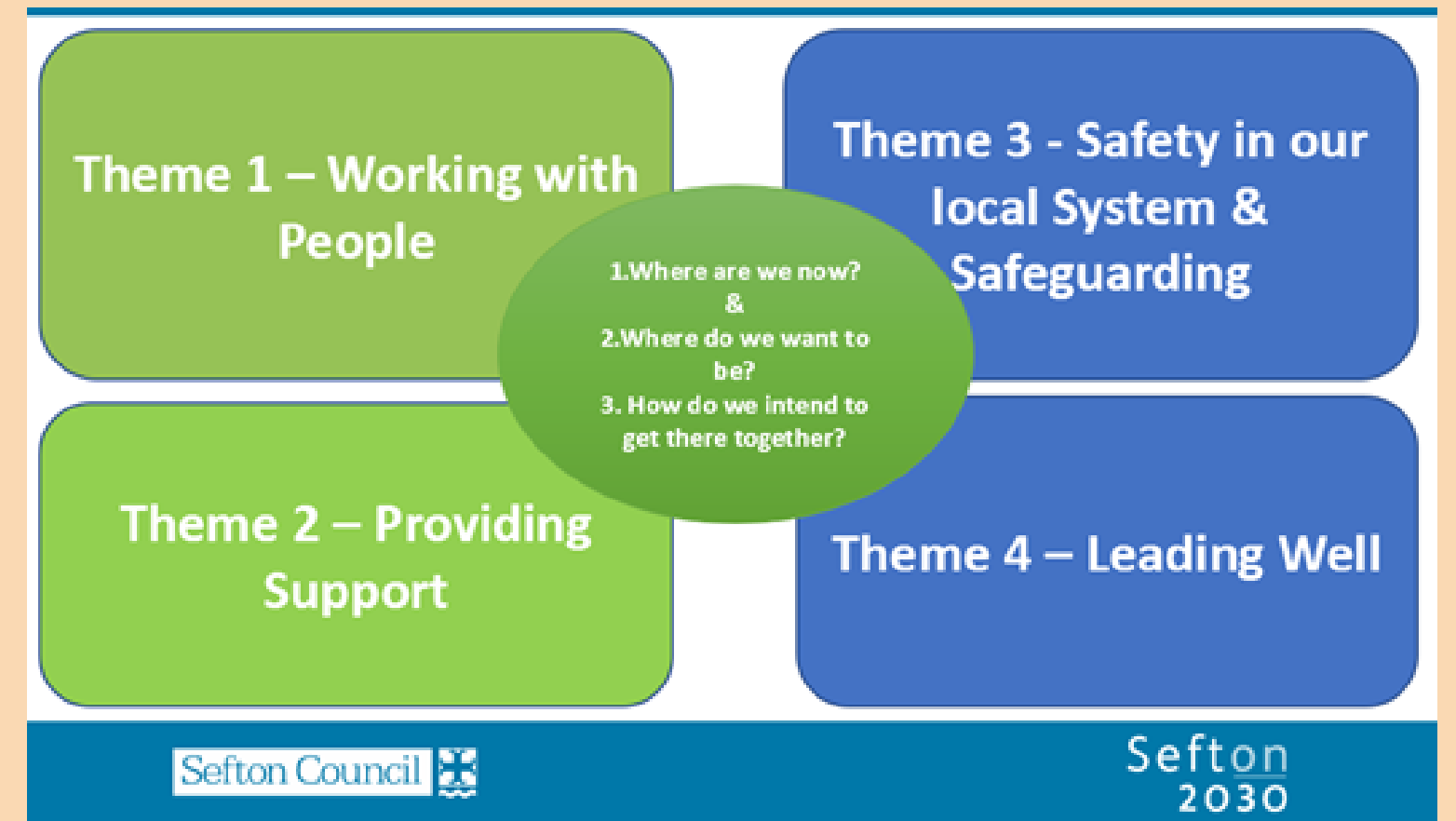
**NHS Improvement Plans in Sefton will focus on empowering patients  
cutting bureaucracy  
Implementing new General Practice  
Utilizing building capacity**

**Success measures need to be defined**

# Care Quality Assurance

Lorriane Goude who is leading on Sefton Council's preparation for the Care Quality Commission Assurance will be bring together a group of VCFSE strategic leads to offer guidance, and work in partnership to not only produce the quality statements and evidence, but to work to deliver continuous improvement. Lorraine is happy to attend HSCF on request.

## Focus for Assurance



# Cheshire and Merseyside Cancer Alliance Social Action Lead for Sefton

## NEW PROJECT

Alicia Watson is the newly appointed Cancer Alliance Social Action Lead for Sefton she is interested to know more about the barriers that people have experienced in accessing cancer screening. Please feel free to contact her at [alicia.watson@seftoncvs.org.uk](mailto:alicia.watson@seftoncvs.org.uk)







# SEFTON HEALTH & SOCIAL CARE FORUM

If you would like to find out more information about the Health and Social Care Forum please contact:

Jan Campbell

jan.campbell@seftoncvvs.org.uk

**REMINDER** - Our next forum will be held in person with a location TBC

Our next HSCF is on **15th November 2023**.

To book your place, please [click here](#)



**Sefton CVS**  
Supporting Local Communities